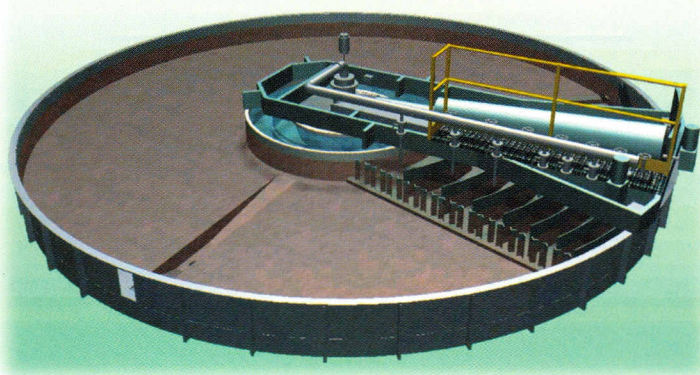


Supercell™

Very high flowrate dissolved air flotation (DAF) clarifier



"Zero velocity" water distribution / recovery concept allows the perfect clarification of very high flows with minimum hydraulic turbulence in a tank with only 400 mm water depth.

Main advantages :

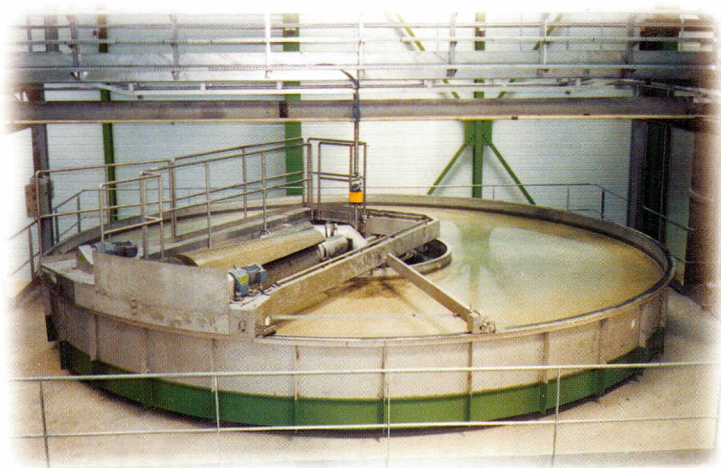
- Very shallow tank - only 950 mm with 400 mm of water depth.
- Excellent solution for high flows.
- High clarification efficiency with moderate polymer consumption due to "zero velocity" concept.
- Low weight loading - 700 kg/m² only.
- Very low retention time - less than 3 minutes.

Main applications :

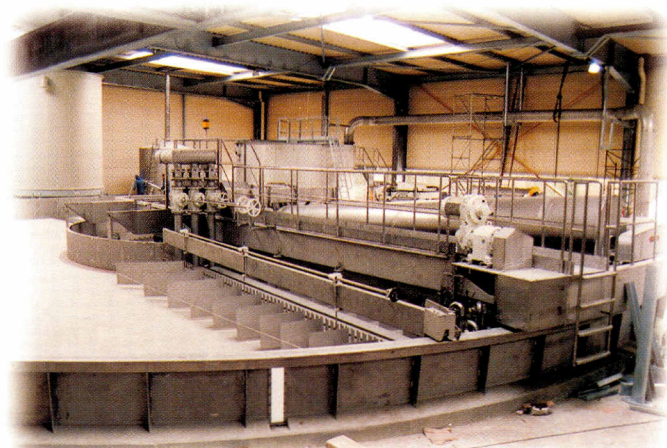
- All process water clarification in the paper industry (white water, de-inking, final effluent ...).
- High flow industrial effluents.
- Tertiary treatment.

The "Double Rotary Joint" is a recommended option for large units, improving the pressurised water distribution and avoiding bubble coalescence and "air losses" in low conductivity or low temperature effluents.

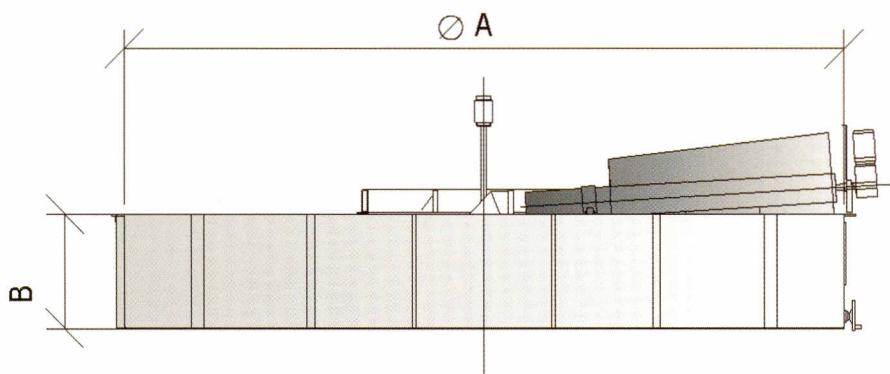
SUPERCCELL is available in 15 sizes from 120 to 2500 m³/h.



SPC 27 - Glass factory effluent



SPC 70 with concrete bottom (installation)



Type	Max. flow (m ³ /h)	Motor scoop (kW)	Motor carriage (kW)	ø A (mm)	B (mm)	Weight tons (full of water)
SPC 15	120	0,75	0,75	4500	950	13
SPC 18	180	0,75	0,75	5500	950	20
SPC 20	220	1,1	1,1	6100	950	23
SPC 22	264	1,1	1,1	6700	950	27,5
SPC 24	305	1,5	1,5	7200	950	31,50
SPC 27	386	1,5	1,5	8100	950	42,5
SPC 30	477	2,2	2,2	9000	950	49
SPC 33	588	2,2	2,2	10000	950	62,5
SPC 36	712	2,2	2,2	11000	950	75,5
SPC 40	876	2,2	2,2	12200	950	90
SPC 44	1056	3	3	13400	980	108
SPC 49	1290	4	4	14800	980	135
SPC 55	1660	4	4	16700	1050	185
SPC 62	2000	4	4	18900	1050	245
SPC 70	2500	5,5	5,5	21300	1050	300

Tervezés
Engineering
Tel.: (1) 2405968
Fax: (1) 2500958

KROFTA Víztechnológiai KFT.
Víz- és szennyvíztisztítási technológiák
Water Treatment's Technology
krofta.hungary@hu.inter.net

Szerelés, üzembehelyezés
Installations, Machinery
H-1033 Budapest
Kaszásdűlő u. 2.